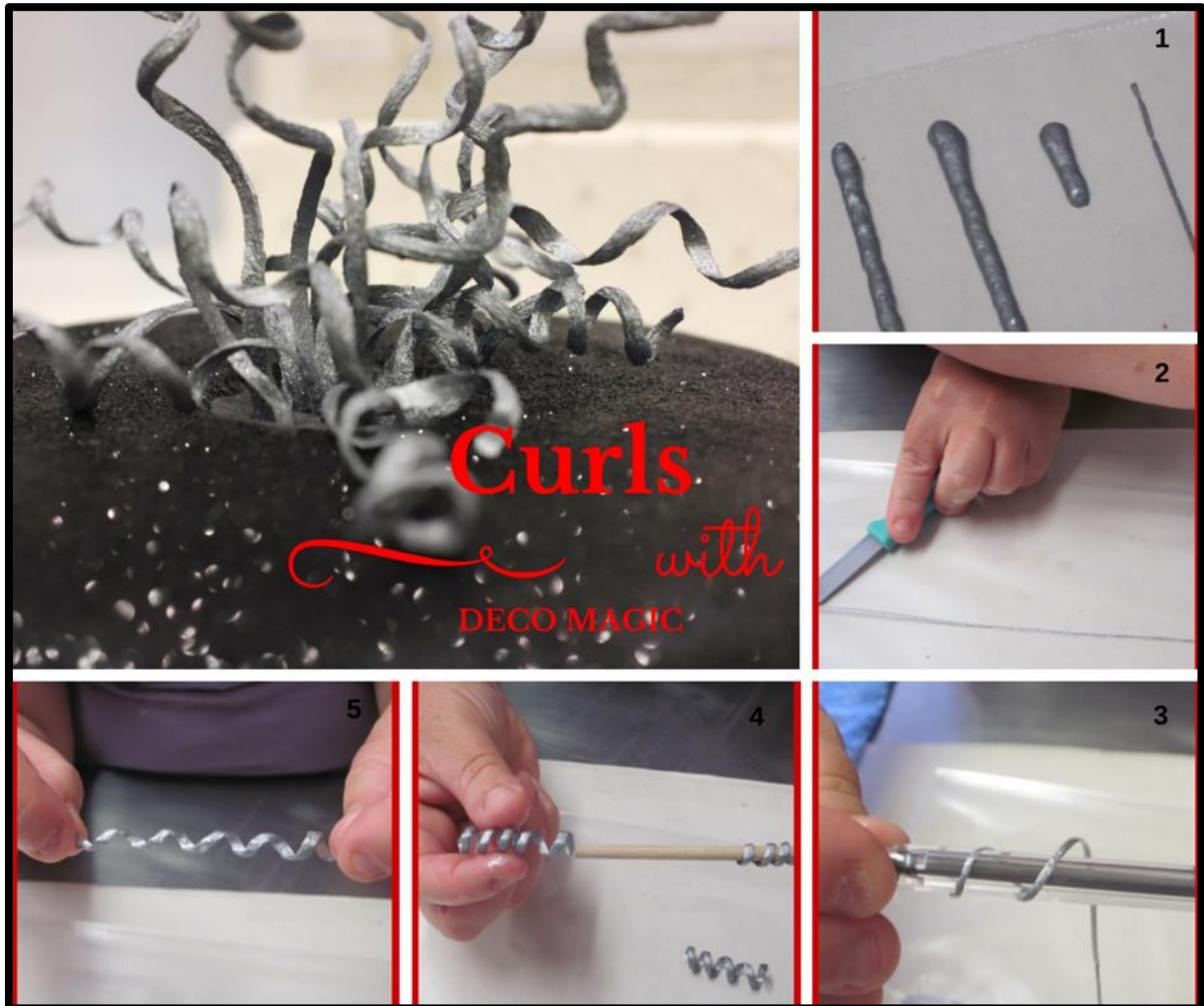


Curls



Steps:

1. Choose your Deco Magic colour in Original Magic gel and place into piping bag with nozzle size selected to match the thickness of curl you require. Pipe straight lines onto a plastic sheet.
2. Leave to partially dry and then carefully pick the line of gel off the plastic sheet.
3. Wrap around either a pen, dowel or some tubing – this will create the size of the curl. Leave to completely dry.
4. Slide off the pen, dowel or tube and ensure it holds its shape.
5. You can make these in different lengths or you can make long lines and cut with scissors to the desired lengths.